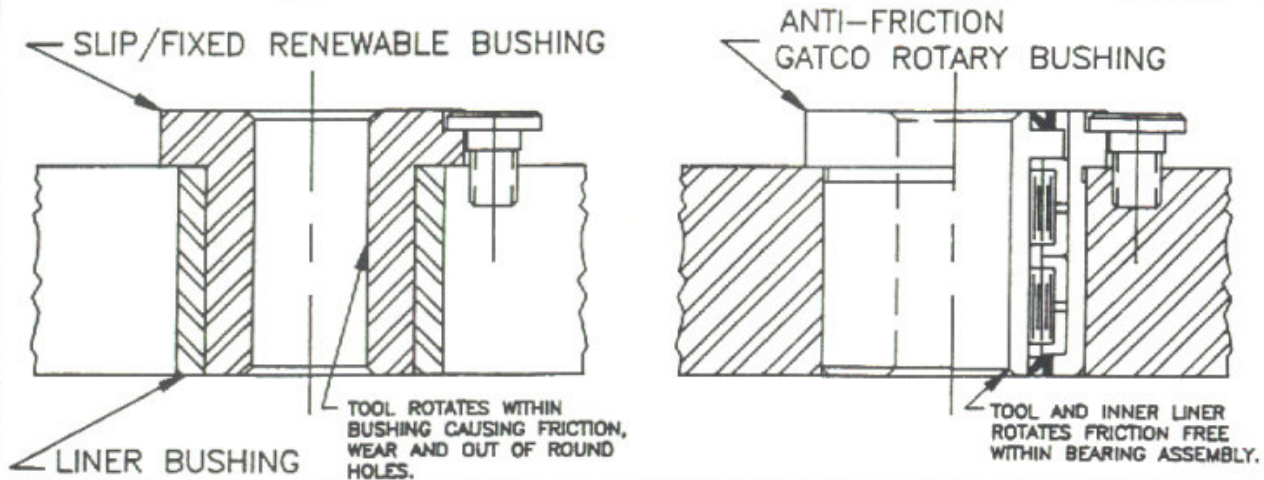




GATCO, INC.

DATA
SHEET
1007

PRECISION ROTARY BUSHINGS



IS THIS YOUR PRESENT BUSHING ARRANGEMENT ?

THEN TRY GATCO'S PROPOSED BUSHING ARRANGEMENT

SOLVE YOUR BUSHING AND TOOL WEAR PROBLEMS WITH GATCO ANTI-FRICTION ROTARY BUSHINGS AND TOOLHOLDERS

HOW CAN WE SOLVE YOUR WEAR PROBLEMS? Anti-Friction Rotary Bushings and Toolholders are self-contained bearing cartridges used to guide and support rotating cutting tools in precision machining operations such as reaming, drilling, spot facing and line boring. Because your tool and our inner liner turn together, you can achieve better size accuracy, improved surface finish, and reduced tool breakage and wear leading to higher productivity and lower cost.

HOW CAN WE HELP YOU? Provide us with the information requested on the reverse side of this flier and we will prepare you a free "no-obligation" quotation and design for your review. We offer complete design services including application evaluation and troubleshooting assistance to help meet your needs.

GATCO also designs and manufactures Anti-Friction Rotary Toolholders. Send us a sketch of your holders with dirt grooves or wear strips for an immediate design evaluation.

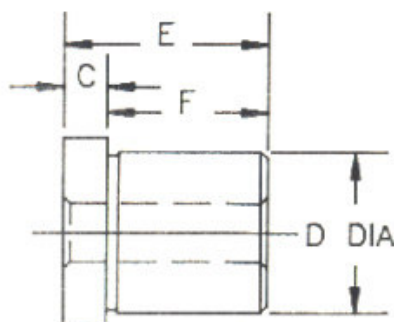
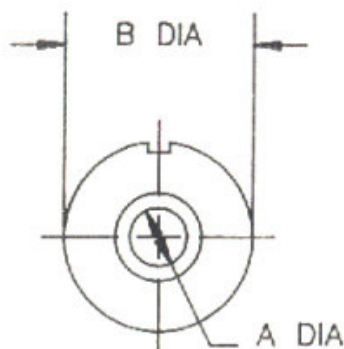
■ CALL OR FAX WITH YOUR DIMENSIONAL REQUIREMENTS ■

GATCO, INC. 42330 ANN ARBOR ROAD, PLYMOUTH, MI 48170 PHONE (734) 453-2295 FAX (734) 453-2310

PRECISION ROTARY BUSHINGS

ROTARY BUSHING DESIGN FAX

SIMPLY PHOTOCOPY THIS FORM, FILL IN THE DIMENSIONS
REQUIRED AND FAX TO US FOR IMMEDIATE DESIGN AND QUOTATION



A _____
B _____
C _____
D _____
E _____
F _____

LINER BUSHING TO BE REPLACED

DRILL BUSHING TO BE REPLACED

COMPANY NAME: _____
ADDRESS: _____
CONTACT NAME: _____
QUANTITY: _____

PHONE: _____
FAX NO.: _____
DATE: _____
DELIVERY REQD. _____

TYPICAL APPLICATIONS FOR ROTARY BUSHINGS

- PRECISION LINE BORING
- REAMING
- HOLLOW MILLING
- RECESSING TOOLS
- INSPECTION FIXTURES
- SPECIAL MACHINE TOOLS
- CORE DRILLING
- GUN DRILLING
- MILLING ARBOR SUPPORTS
- DRILLING
- SPOT FACING
- PORTING TOOLS

■ CALL OR FAX WITH YOUR DIMENSIONAL REQUIREMENTS ■



GATCO, INC.

42330 ANN ARBOR ROAD
PLYMOUTH, MI 48170
PHONE (734) 453-2295
FAX (734) 453-2310